



Protecting High Performing Leaders

This document is created to introduce InfoSec leaders to the **Cyberwolf CORE** protection.

Please do not hesitate to share any questions you might have to your internal point of contact or to us directly via question@cyberwolf.io. We highly value your feedback.



About us

Cyberwolf helps leaders protect themselves, their families and the company.

Our Cyberwolf Security Suite brings enterprise-grade security to the private context, without compromising convenience or privacy.



All-inclusive protection:
private & professional



White-glove
service



Anonymity across
the board













Accessible to all
types of users



Transparent
reporting



Who protects your personal exposure?

-  Private phone
-  Private email
-  Private laptop
-  Home network
-  Social accounts
-  Confidential files
-  Photos
-  Financial accounts
-  Family devices
-  Family accounts

...



Prosperity has its price.

72% of U.S. c-suite are cyber targets.

2024 Executive Cybersecurity Survey (GetApp, 2024.)

Your role as a leader makes you a prime target for hackers in their search for sensitive information or influence.

Hackers often target personal devices, emails, or social media accounts because they're easier to breach than advanced corporate systems.

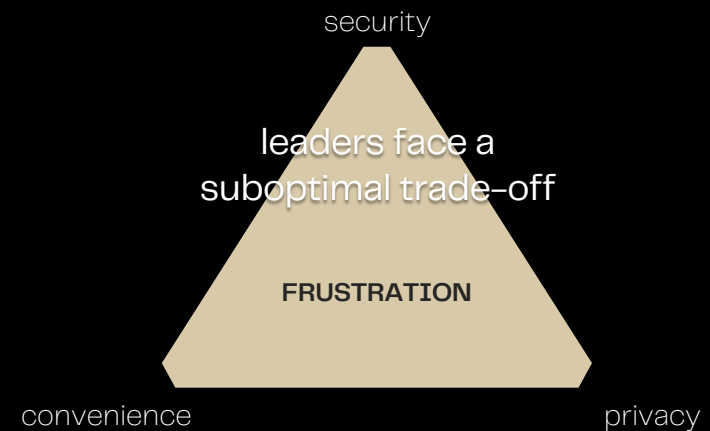


How leaders introduce cyber risk



Company perspective

"elephant in the room"



Leaders' perspective

"don't slow me down"



Risk Context

Geopolitical players
(crucial industries and politics)

High-risk industries or regions
(energy, finance, high-tech, resources, critical supply chains or infrastructure)

Wealthy families, Family offices & Investment firms

Leaders of large enterprises
(>\$1Bn revenues)

Leaders of medium enterprises
(\$100mio-1Bn revenues)

Private risk exposure

Leaders, family, and entourage.

Leaders, family, and entourage.

Leaders and family.

Leaders and close entourage.

Leadership.



Why your leaders need private protection.

Peace of mind

Would you be relieved to know you can't make any mistakes anymore?

No matter what you do, we've got your digital back, 24/7.

Finances

If you're seeking a trusted device and secure connection to invest and manage your finances, we're here for you.

Family

Our borderless digital world knows no limits. Keep your family safe from extortion schemes designed to pressure you.

Privacy

Block the thousands or daily attempts to take your data and reclaim your privacy. It's your right.



Why leaders choose Cyberwolf

Excellence

Protecting the world's wealthiest families has culminated in the most comprehensive Security Suite on the market.

We promise you a native user experience, backed by heavy-duty security technology, 24/7.

Servitude

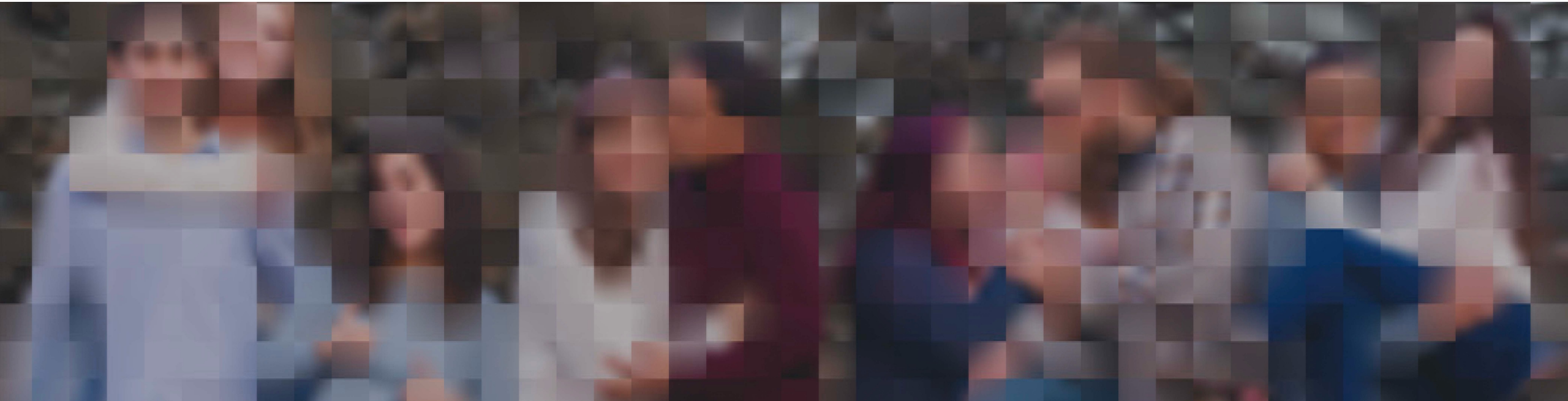
We care about experience more than scope.

Any security or privacy concern will be resolved or answered with due care. We don't cut corners, we build trust.

See what you pay for

Want to know how we protect you every day?

Browse our app for detailed insights on blocked spyware, malware, phishing, compromised accounts or unsafe WiFi networks ... it's all there.



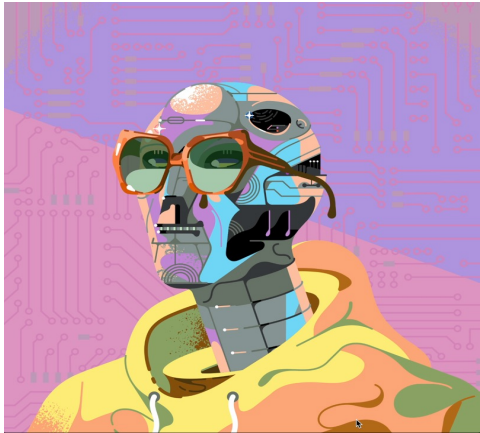


What's included.

CYBERWOLF SECURITY SUITE ELEMENTS	CORE
Personal iPhone/iPad protection	Included
Personal MacBook/Windows PC protection	Included
Privacy & Security assistance	Included
Cyberwolf App	Included
Security Operations Center (SOC) (24/7)	Included
Cyber Security Incident Response (24/7)	Included
Private data storage	Included
Private email security	Included
AmIPhished assistance	Included
Data Breach Alerts	Included
Home Network scanning	Included
Forensic device scan (on request)	Included



The Cyberwolf Experience.



All members are protected by a pseudo-identity and digital avatar to keep identities hidden, even for our own staff.

It's your unique Cyberwolf piece.

1/Welcome to the pack!

Prior to onboarding, we'll mail you the Cyberwolf Essentials. It's all you need to know about cyber – the luxury edition.

2/Digital Exposure Report

Cyberwolf staff uncover your digital exposure and how hackers would abuse this exposure in a personal report.

3/Onboarding

Cyberwolf secures all your devices and accounts in 45–90 minutes. Onboarding can happen in-person (preferred) or remote.

4/Vulnerability scans

In your first weeks, we scan all devices, accounts, and networks in your digital routine for vulnerabilities.

5/Personal guidance

If required, we will contact you personally about new vulnerabilities, data leaks in public breaches, or other security concerns we'd like to resolve for you.

6/Wrapped time!

In December, you'll get your personal 'Wrapped' video to summarize how we protected you that year.



Hidden but present, discrete yet effective.

Cyberwolf protects its members against **23 threats each month** on average.

11 online threats

per month while browsing.

Threats include spyware, malware, phishing, ransomware, crypto mining, and account takeovers.

9 unsafe WiFi

connections per month.

Frequent travelers rely on whatever connectivity options are available to them—a serious risk.

3 email threats

per month.

Threats include phishing, malicious URLs or attachments, and other viruses.

2 breach alerts

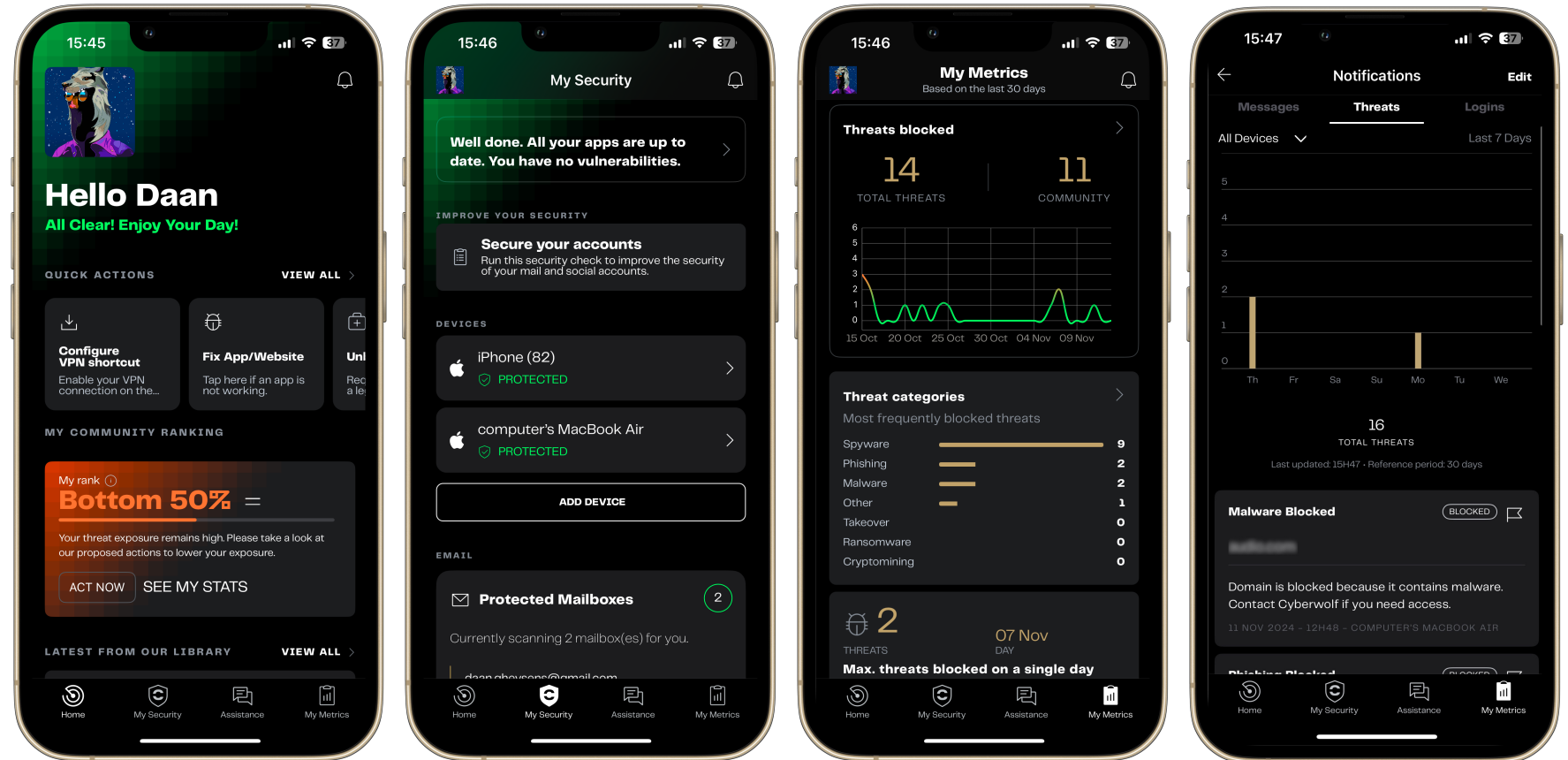
for leaked data in the last 2 years.

Leaked personal data is used by hackers to compromise accounts or run phishing attempts.



The Cyberwolf app. Security made sexy.

Have a look at our app to see what happens under the hood. Clean up your exposure and climb your way to the top of the community ranking.





Why CISOs choose Cyberwolf

Full VIP compliance.

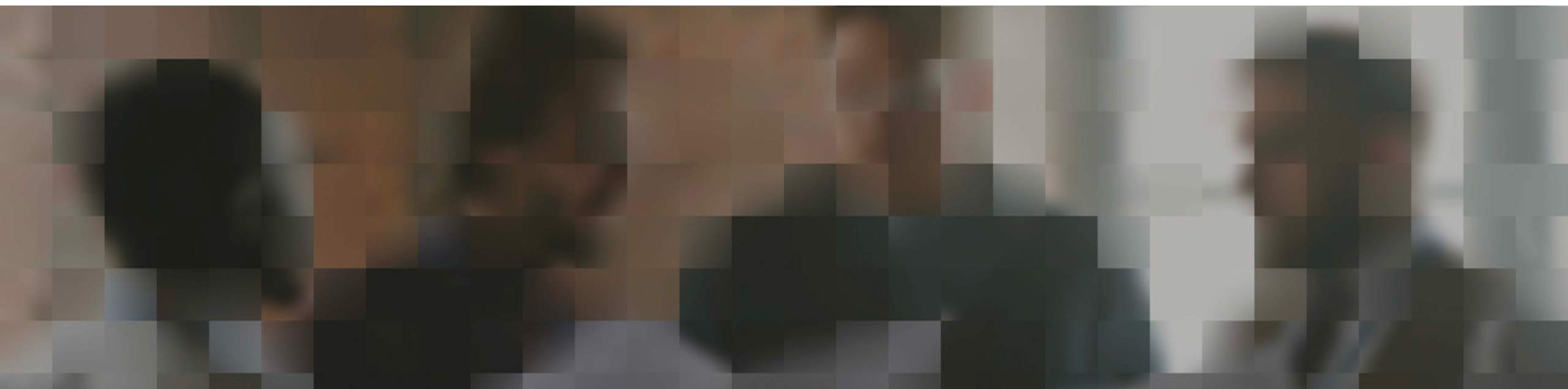
Achieve the highest security standards for leadership by eliminating exceptions and policy pushback without a fight.

Designed for VIPs.

Introduce a service that pleases both your leadership and your support team.

Top-level awareness.

Boost your security narrative with a positive answer to complex problem and enjoy the benefits of higher leadership awareness.





Start your onboarding journey today.

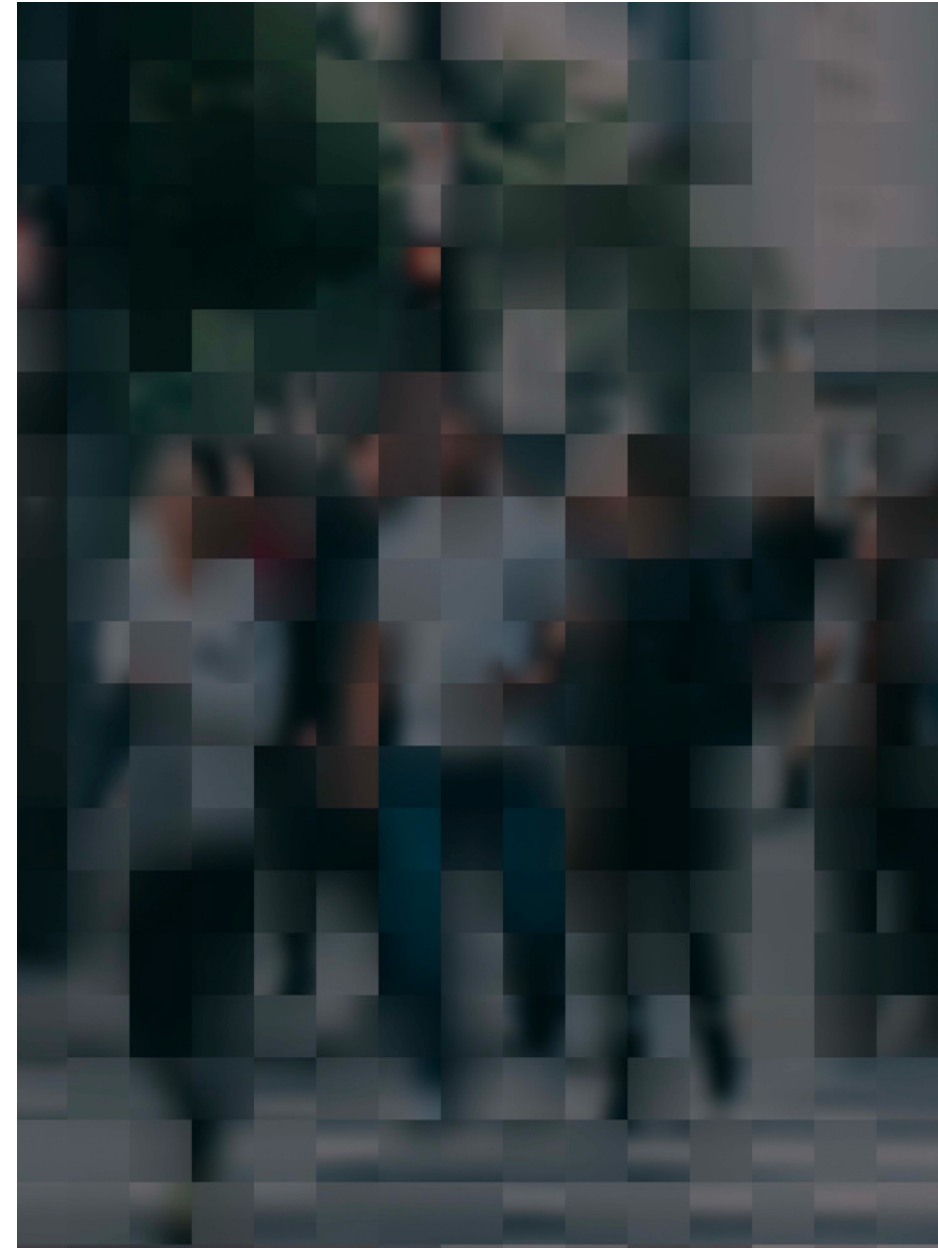
Onboarding

Cyberwolf secures all your devices and accounts in 45–90 minutes. Onboarding can happen in-person (preferred) or remote.

Prerequisites

Cyberwolf currently supports protection for iPhone, iPad, Mac, Windows and all email providers.

Devices need to support the latest operating system version.





Scope.

How we complement each other.

The Cyberwolf Security Suite is built to complement and strengthen your company infrastructure, not replace it*.

We highly recommend to onboard all hybrid devices for all parties to enjoy full benefits.

Private devices or assets are in scope by default. Professional IT infrastructure is out of scope by default.

**Unlike Cyberwolf Pro, which offers full IT setups for small organisations (<20) such as holdings, family offices, funds.*

ASSETS	CYBERWOLF SCOPE	COMPANY SCOPE
Hybrid iPhone/iPad	Highly recommended	Not recommended
Private iPhone/iPad	Included (default)	-
Private computer	Included (default)	-
Home Network Security (incl. hardware)	Recommended (optional)	-
Dark Web Monitoring for accounts	Included (default)	-
Private data storage	Included (default)	-
Private email security	Included (default)	-
Professional computer	Optional	As-is (default)
Professional email	-	As-is (default)
Professional data storage	-	As-is (default)
Other work-related accounts or systems	-	As-is (default)



Best of both worlds.

How we combine MDM with MAM.

PERSONAL PRIVACY

Cyberwolf's Mobile Device Management (MDM) protects devices and communication with a complete Security Suite that does not compromise on user experience or privacy.

As a result, the **Company does not have unnecessary access to personal files, communication or internet browsing.**

Thus, Corporate Control does not come at the expense of Personal Privacy.

CORPORATE CONTROL VIA MAM

The **Company retains full control over corporate apps, accounts, and data**, through Mobile Application Management (MAM).

Secure & remove corporate data within mobile apps.

Enforce conditional access to restrict which apps can be used to access corporate email or files

Publish, configure; and update apps to users, e.g. Outlook, Teams.

Report app inventory & usage

Cyberwolf has no access to corporate data or accounts. Thus, Personal Privacy does not come at the expense of Corporate Control.





CYBERWOLF & SKYLEAF

who we are

Cyberwolf was founded in 2021 as a portfolio company of the Skyleaf Group. The Skyleaf Group is committed to securing companies, people and machines in a digital-first world.

The group was founded by Steven Vynckier & Frederik Rasschaert. Since its first company Spotit (2014), two other portfolio companies were added: Spotit Security Inc. (2021, US) and Cyberwolf (2021).

In 2021, the Skyleaf senior leadership team was further reinforced by the appointment of Jo Deblaere as chairman.

Cyberwolf US was founded in 2023 in Atlanta, GA.



Jo Deblaere
Skyleaf Chairman

Former COO & Board at Accenture ('85-'22).



Steven Vynckier
Founding Partner at Skyleaf Group



Frederik Rasschaert
Founding Partner at Skyleaf Group

CTO Cyberwolf



Daan Gheysens
CEO Cyberwolf





CYBERWOLF

We protect what's precious.