



Alsaac Cyber Mesh



an atos business

Alsaac Cyber Mesh is a next-generation managed detection and response (MDR) service from Eviden that provides advanced threat protection, detection, response, and recovery capabilities. It is powered by the Alsaac platform, which integrates various security tools and data sources into a single, interoperable framework. This enables enterprises to secure their entire digital estate using a single platform across all security layers.

Alsaac Cyber Mesh utilizes the power of generative AI, a purpose-built security data lake, and a cybersecurity mesh architecture to provide:

Automated cognitive security operations

Unified data and predictive analytics

Cyber resilience across the modern digital estate

The Challenge: Less Cybersecurity Staff, Visibility, and Resilience

The world of cyber threats is evolving rapidly, and organizations are investing heavily in security services and solutions to stay ahead. Security is no longer just a technical concern but a critical business imperative that affects the speed of digital transformation, brand reputation,

and overall growth. Senior executives are asking tough questions about security integration, threat response, and business continuity. Despite significant staff, tools, and processes investments, many organizations are still struggling to mitigate security and compliance risks. This is due

to limited staff, threat visibility, and cyber resilience. The global shortage of cybersecurity talent, the challenge of integrating security data from multiple sources, and slow incident response times are major obstacles organizations must overcome to stay secure.



The Solution: Alsaac Cyber Mesh

Alsaac Cyber Mesh, a next-gen MDR service from Eviden, solves these problems. It offers next-generation protection, detection, response and recovery from threats, providing automated cognitive security operations, unified data and predictive analytics, and cyber resilience across the modern digital estate.

Automated Cognitive Security Operations (ACSO)

The future of cybersecurity now: In today's ever-changing threat landscape, organizations need a comprehensive cybersecurity solution that can help them detect, respond to, and prevent cyberattacks. ACSO is a modern approach to SOC that uses artificial intelligence (AI) and machine learning (ML) to provide organizations with a single view of their security posture, identify and respond to threats faster, and reduce costs.

ACSO can help organizations:

- **Detect threats faster:** Proactively scan for known threats, correlate large data sets to identify malicious activity and hunt for previously unknown threats across the digital estate. Our modern AI-driven operations help detect threats 90% faster than current SOC practices.
- **Respond to threats faster:** Contain, accelerate, and automate response actions and receive generative AI insights for human-operated tasks. With ACSO powered by a cyber mesh architecture and generative AI, we prioritize threats and rapidly respond to minimize the damage caused by an incident.
- **Reduce costs:** With our mesh-enabled framework, you can fully utilize your existing security technologies without purchasing new products or third-party services for managing cyber threats and maintaining your security stack.
- **Boost efficiency:** ACSO improves the efficiency of security operations and offers additional cost savings by automating many of the tasks involved in security operations. This can give your internal teams new tools to streamline their higher-order responsibilities.
- **Improve security posture:** Continuously evaluate your security controls and compliance to improve your security posture and meet the regulatory mandates of your industry.

Anticipate threats with unified data and predictive analytics

With a centralized security data lake and predictive analytics for better identification and prioritization and correlating hundreds of threat intel sources, our teams identify potential targets for cyber attacks to proactively raise your defenses.

Alsaac Cyber Mesh derives new actionable insights from traditionally discrete and siloed cyber, fraud, financial crimes, and other business data. This allows organizations to gain a deeper understanding of the threats they face and to take steps to mitigate those threats and vulnerabilities.

Our unified data and predictive analytics can help:

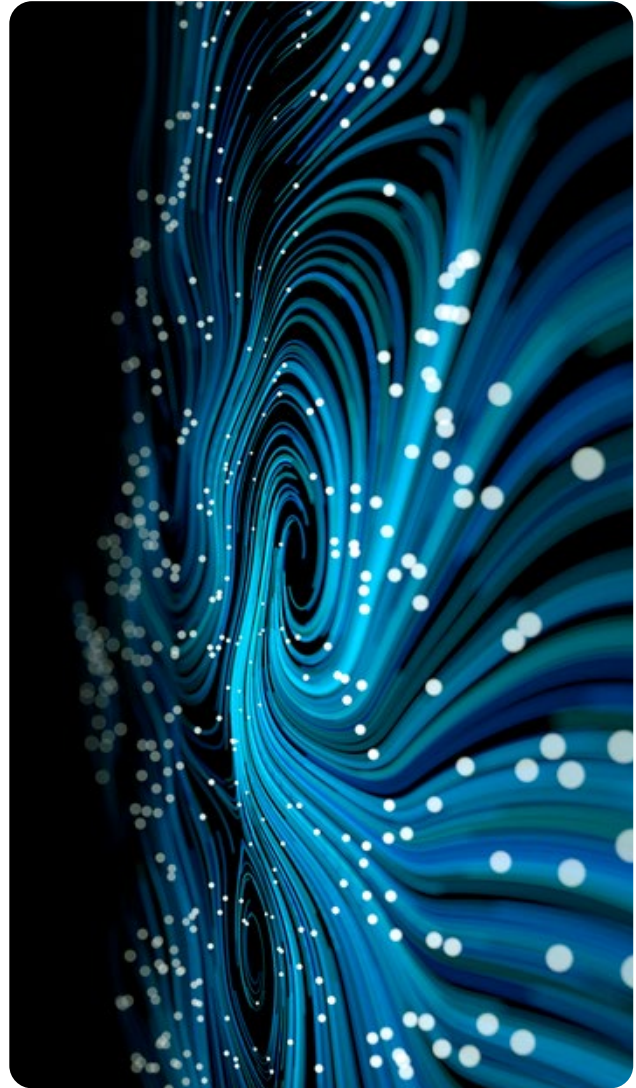
- **Reduce threat exposure:** Identify and mitigate the risks posed by internet-exposed assets. Uncover unauthorized access, misconfigurations, and vulnerabilities by likely oncoming threats across your digital estate and prioritize closing exposures based on the likely hood of exploitation.
- **Enrich threat intel with AI:** Alsaac Cyber Mesh uses advanced AI and ML technology to correlate threat behavior, business data, and threat intelligence. This allows us to identify and prevent threats before they occur by weaving threat intel into every security capability.
- **Improve policy management:** Uniformly evaluate, define, and apply effective security policies onto assets and employees across the digital estate. Use automatic resolution of policy violations, such as misconfigured security groups and more, to prevent threats.
- **Business risk dashboard:** Control a wide range of security risks, including cybersecurity, fraud, financial crimes, and operational downtime. Give business and security stakeholders a holistic view of their security risk posture through a single pane of glass.

Cyber resilience made easy

Alsaac Cyber Mesh is highly advanced and constantly adapts to changing threats. We automate business recovery assessments and rapidly provide the information required to create and deploy a recovery plan after an incident. It offers a unique combination of predictive models, cybersecurity tools, and skilled global staff to reduce the operational and financial impact of cybersecurity, fraud, and financial crimes and improve cyber resilience.

Our adaptive cyber security can enhance your cyber resilience by:

- **Adaptive defenses:** With a decentralized security mesh architecture and centralized security data lake, we adapt your security to changing threats and proactively raise your defenses.
- **Learn and adapt continuously:** Use advanced AI systems to identify potential threats early, respond swiftly to minimize the impact of an attack, and use learnings from every incident to raise your defenses.
- **Incident response:** Reduce the operational and financial impacts of cyber, fraud, and financial crimes. Access root causes, collect evidence, get help reporting to regulatory authorities and more.
- **Recovery management:** Receive support recovering lost data and files, restoring business functions, and complying with post-incident audits.



How It Works: Purpose-Built AI on a Cyber Mesh Architecture

The Alsaac Cyber Mesh is a purpose-built solution that can be optimized for the organization deploying it. The solution utilizes a Cybersecurity Mesh Architecture (CSMA) that unifies data silos into an integrated end-to-end digital security ecosystem, and processes this data with alerts, flows, vulnerabilities, and configuration changes from a single central console.

By leveraging the Alsaac Cyber Mesh, organizations gain:



Interoperable Cybersecurity Mesh Architecture

A new approach to applying consistent, controllable, and scalable security across today's most dynamic, distributed digital estates.

As Gartner notes, a Cybersecurity Mesh Architecture (CSMA) is "a composable and scalable approach to extending security controls, even to widely distributed assets... Rather than every security tool running in a silo, a cybersecurity mesh enables tools to interoperate through several supportive layers, such as consolidation of policy management, security intelligence, and identity fabric". Alsaac Cyber Mesh leverages security features and data from a wide range of security products to create a unified front against threats.



Generative AI/ LLM for Response Automation

Reduce the impact of attacks. Accelerate and automate key security actions during an incident to respond and recover swiftly.

Alsaac Cyber Mesh leverages generative AI/LLM built with Eviden's Incident Response and Threat Intelligence knowledgebase and third-party services, including AWS Bedrock and SageMaker. These models automate incident detection and response processes to analyze and contain incidents rapidly, determine their impact on assets, provide information on threat actors, and minimize the spread of an attack. It provides accurate, actionable security insights and suggested response actions to human operators and automates other response processes to accelerate the resolution of complex security challenges.



Security Lake

Automatically centralize security data and normalize it according to the Open Cybersecurity Schema Framework (OCSF) standard.

Alsaac Cyber Mesh leverages Amazon Security Lake to consolidate data from traditionally discrete and siloed sources, including cybersecurity data, fraud data, financial crime data, and other business processes. Doing so creates a single, central, and normalized view of all relevant security data across the estate. It can then be shared, used by multiple tools and teams, and leveraged to drive advanced analytics. It can analyze large-scale datasets — both real-time data and years of historical data — to streamline incident detection and investigation.



Predictive Analytics

Simplify the process of anticipating threats, assessing business risk, and prioritizing security actions to prevent the most significant threats.

Alsaac Cyber Mesh collects and correlates threat intelligence from hundreds of sources to drive threat hunting and proactively raise defenses. By doing so, it identifies threats that don't conform to known attack patterns and that operate across multiple analytics channels, derives insights from traditionally discrete and siloed data sets, and drives automated, methodical, and continuous hunting. It leverages advanced AI and ML, correlates feeds to make sense of complex and massive volumes of security data and contends with the unknown nature of most modern threats.



Who It Helps: Primary Use Cases

Alsaac Cyber Mesh is a powerful, flexible suite of services and tools that can deliver a wide range of security outcomes and use cases, including:

Securing cloud workloads

Moving workloads to public clouds or creating new cloud-based innovation streams that need to be protected.

Secure hybrid environments

Securing on-premises assets and legacy systems and applications, including OT and IoT.

SecuBusiness and threat data integration

Consolidating a wide range of data - including fraud, financial crimes, anti-money laundering, and physical security.

Advanced detection and response

Proactively detecting and preventing threats by feeding advanced data analytics and AI to SIEM/EDR systems.

Industry-focused solutions

Increasing security and compliance for highly regulated industries like financial services, healthcare, and energy.

Cyber resilience

Improve management of cybersecurity incidents, fraud, and financial crimes to reduce operational and financial impact and recover.

Deploying Alsaac Cyber Mesh - Register Your Interest Now

Alsaac Cyber Mesh is offered by Eviden, an Atos business that combines digital, cloud, big data, and security functions into one unit. Eviden deploys 6,500 security experts across 16 global SOCs and leverages the award-winning Alsaac MDR platform to deliver comprehensive security across today's digital estates.

Eviden provides industry-specific automation and security for critical applications and business processes within highly-regulated verticals, including energy and utilities, financial services and insurance, healthcare and life sciences, manufacturing, the public sector and defense, retail, transport, logistics, media, and telecom.

Eviden leverages AWS for Alsaac Cyber Mesh. AWS provides the world's most comprehensive, secure, and broadly adopted cloud and the most secure computing environment available. Its core infrastructure satisfies the security requirements of the military, banks, and other highly-sensitive organizations. The Alsaac Cyber Mesh combines two core AWS capabilities — the Amazon Security Lake and AWS AI and ML, including generative AI services like Bedrock and SageMaker.

Reach out today to register your interest in the Alsaac Cyber Mesh.

Suffering an incident?

Contact us immediately for emergency breach services at
North America: +1-866-246-2848
Worldwide: +48 525 866 415

Want to learn more?

Schedule a consultation to understand if Alsaac Cyber Mesh is the right solution for your business.

Connect with us



eviden.com

Eviden is a registered trademark © Copyright 2023, Eviden SAS – All rights reserved



ECT-230608-AR-Alsaac Cyber Mesh-en-V1